

We are now accepting
MasterCard and VISA!

Gohn Bros.

Box 1110
105 South Main Street
Middlebury, Indiana 46540-1110

Phone (574) 825-2400 or CALL TOLL FREE (1-800-595-0031)

www.gohnbrothers.com

— Over 100 Years —

AMISH AND PLAIN CLOTHING

PRICES SUBJECT TO CHANGE WITHOUT NOTICE

SPRING 2016

STORE HOURS: Mon.-Fri. 8:00 to 5:30
Saturday 8:00 to 4:00
Sunday Closed

Men's & Boy's Store	page 1
Women's & Girl's Shop	4
Infant's Shop	5
Boot & Shoe Store	5
Hard-to-Find Corner	6
Closet	6
Book & Game Store	6
Sewing & Quilting Shop	7
Hard Goods Store	9

HIGHLIGHTED OR SHADED AREAS INDICATE NEW PRODUCTS OR SPECIAL PRICED ITEMS.

Men's & Boy's Store

	XS	S	M	L	XL
Head Measurement	20 1/2 20 3/4	21 1/8 21 1/2	21 7/8 22 1/4	22 5/8 23	23 1/2 24
Hat Size	6 1/2 6 5/8	6 3/4 6 7/8	7	7 1/8 7 1/4	7 3/8 7 1/2 7 5/8

MEN'S BLACK HATS Sizes 6 5/8 to 7 5/8

ROUND CROWN, BOUND EDGE

- No. 5750 2-1/2" brim, 5-1/2" crown (Limited Sizes) \$91.98
- No. 627 3" brim, 5-1/2" crown \$139.00
- No. 604 3-1/2" brim, 5-1/2" crown \$149.00
- No. 77 3" brim, 4" crown \$139.00
- No. 80 3-1/2" brim, 4-1/2" crown \$98.00
- No. 81 3-1/2" brim, 4-1/2" crown, raw edge, 6-5/8, 6-3/4, 6-7/8 \$99.98
- No. 99 4" brim, 4-1/2" crown \$139.00
- No. B626 STETSON HAT. 2-3/4" brim, 5-1/2" crown \$105.00
- No. S35 STETSON HAT. 3" brim, 5" flat crown \$149.00

ROUND CROWN, BOUND EDGE, WOOL FELT

- No. W0626 2-3/4" brim, 5-1/2" crown (Limited sizes) \$64.98

CREASED CROWN HATS, BOUND EDGE

- No. 6928 2-1/2" brim, 4" crown, wool. Limited sizes \$59.98

CRUSHABLE HAT. Black Reemay Braid \$29.98

2-1/2" brim, creased crown. Sizes 6-5/8 to 7-5/8.

PLASTIC HAT COVERS. S, M, L, XL \$4.59 ea.

No. 1000 Boys' & Men's ROUND CROWN, BLACK WOOL HATS

2-1/4" brim, 5" crown. Sizes 7-3/8, 7-1/2, 7-5/8 \$26.98 ea.

STRAW HATS, for the summer heat:

- Boys' tan or black. S, M, L \$11.98 ea.
- No. 706 Men's Dress Straw Hat. Pinch crown, 2-1/2" brim .. \$34.98 ea.
State size: Sizes 6-5/8 to 7-5/8. Black or tan.
- No. 906 Men's Dress Straw Hat. Creased crown, 2-1/2" brim .. \$34.98 ea.
State size: Sizes 6-5/8 to 7-5/8. Black or tan.

SEAGRASS Straw Hats. 3" brim. Sizes XS, S, M, L, XL. Sand color.

- Above hat in pinched crown \$34.98
- Above hat in creased crown \$34.98
- No. 4587 Men's tan, flat crown, 4" brim. State Size \$18.98 ea.
- No. 103 STRAW HAT. Round crown. Tan. S, M, L \$11.98 ea.

KNIT CAPS

- No. 261 Men's or Boys' THE INCREDIBLE BULK \$7.49 ea.
The heaviest thermal power cap we have found. Black.
- No. 271 Men's or Boys', 100% Orlon, extra heavy.
Black \$6.98 ea.
- No. 276 Men's or Boys' 100% Orlon, reg. wt. Navy or black .. \$2.98 ea.
- No. 230 Men's or Boys', 100% Orlon \$4.59 ea.
Pull down and only face shows. Navy or black.
- No. 132 Little Boys'. Ear Tabs. Tie under chin. Navy \$3.49 ea.
- Infant and Toddler. Tie. White \$4.98 ea.
- No. 196 Ear Muff. Acrylic. Navy \$3.49 ea.

HUNTING CAP. Bright orange color. 100% acrylic.

Heavy weight \$6.98

GOHN BROS. COATS

Standard features on all coats.

- Two inside pockets, no outside pockets no charge
- Lay down collar no charge
- Sizes 34 to 44
- Sizes 46, 48 and 50 \$3.00
- Snap closure no charge
- Hook & eyes sewn on coat \$3.00
- Full cut allows garments underneath

ALTERATIONS available on GOHN BROS. coats.

- Stand up collar \$2.00
- Outside pockets only no charge
- Outside and inside pockets \$5.00
- Button holes only (for closure) \$2.00
- Button holes with metal button \$3.00
- Quilted lining, has 5 oz. fill (option for lined coat only) \$8.00
- Regular cut, allows for a tighter fit around the waist \$3.00

PLEASE NOTE, coats with alterations cannot be returned as they are not stock items.

- No. 225 Black twill denim. Poly, cotton \$58.98 ea.
- No. 288 Tri-blend denim, dacron, nylon, and cotton \$67.98 ea.
- No. 290 100% cotton. Blue denim \$58.98 ea.
- No. 255 100% cotton. Blue saddle denim \$58.98 ea.
- No. 266 100% cotton. Gray saddle denim \$58.98 ea.
- No. 244 100% cotton drill. Natural color \$58.98 ea.

UNLINED COATS

- No. 125 Black drill denim. Poly, cotton \$48.98 ea.
- No. 188 Tri-blend denim. Dacron, nylon, and cotton \$58.98 ea.
- No. 190 100% cotton. Blue denim \$48.98 ea.
- No. 155 100% cotton. Blue saddle denim \$48.98 ea.
- No. 166 100% cotton. Gray saddle denim \$48.98 ea.
- No. 144 100% cotton drill. Natural color \$48.98 ea.
- No. 277 DOESKIN. Quilted lining. Black \$68.98 ea.

This is 100% polyester and is more dressy. Doeskin are special cut and cannot be returned. State snaps or hook and eye.

No. 2406 MEN'S WINTER COAT.

Nylon outer shell, black pile lining. All have snaps. Black or navy.
 Sizes XS, S, M, L, XL \$49.98 Size XXL \$55.98

No. 1306 MEN'S NYLON JACKETS. Snap front.

100% cotton Kasha flannel lined. Washable. Black or navy.
 Sizes S, M, L, XL \$32.98 Size XXL \$36.98

MEN'S MELTON PEA COATS. Black \$175.00 ea.

These are 80% wool jackets. 34 to 46 chest measure. 30-32" long.
 Button front. Double breasted. Two inside pockets.

No. 600 QUILTED NYLON VEST. Heavyweight. Snap front.

Two front pockets. Navy. Sizes S, M, L, XL \$54.98 ea.
 XXL \$59.98 ea.

No. 700 QUILTED POPLIN VEST. Heavyweight. Snap front.

Two front pockets. Navy. Sizes S, M, L, XL \$56.98 ea.
 XXL \$61.98 ea.

MEN'S UTILITY VEST, WOOLRICH \$54.98 ea.

85% wool, 15% nylon. 25" length. 4 front pockets.
 Bt. closure. Black w/gray pinstripe. Sizes 36-52.

RAINSUIT. 2-pc. suit with attached hood \$25.98

Jacket with zipper and snaps, 2 front pockets.
 Pants with elastic waist. 2 layers of PVC for extra strength.
 Dark navy. Sizes S, M, L, XL, XXL.

DOUBLEBREASTED LONG OVERCOAT with CAPE .. \$350.00 ea.

Heavy 22 oz. melton wool with cotton twill lining. Two outside pockets and two inside pockets. All pockets are inset. All are made to order. Please advise on sleeve length and coat length. Sizes are (Small 34-36), (Medium 38-40), (Large 42-44), (Extra Large 46-48) (Extra Extra Large 50-52). Call 1-800-595-0031 for information or write for samples of fabric and pictures.

MEN'S BROADFALL DROP FRONT WORK PANTS

PLEASE NOTE INFORMATION ON SIZE, OPTIONS, RETURNS, AND PRICING BEFORE ORDERING.

Size is determined by waist and inseam measurement. (inseam is measured from the crotch to desired length)

Sizes Available:	WAIST	INSEAM
	28	28, 30, 32
	29-42	30, 32, 34
	44	30, 32
	46-50	32

THE STANDARD FINISH on all pants is with two back hip pockets, a plier pocket on the right side, a watch pocket, two front pockets, and stamped on metal buttons for closing pants and for suspenders.

THE FOLLOWING OPTIONS ARE AVAILABLE:

- 1 - No hip pockets on the back of pants
- 2 - No plier pocket on the right leg
- 3 - No metal buttons stamped on
(We will send plastic buttons along)
- 3a - No suspender buttons stamped on

THE FOLLOWING OPTIONS ARE AVAILABLE BUT THE PANTS MAY NOT BE RETURNED:

- 4 - Belt loops added (No suspender buttons) \$2.00 pr.
- 5 - Hammer loop added \$1.00 pr.
- 6 - Snaps added replacing buttons \$4.00 pr.
- 7 - Longer length (special cut) \$5.00 pr.
- 8 - Slimmer fit in seat and legs \$2.00 pr.
- 9 - Adding double knees to pant leg \$5.00 pr.
- 10 - Larger sizes Call for price

RETURN INFORMATION ON THE PANTS:

#88, 1190, 66 and 55 are stocked items and may be returned UNLESS options made make them not returnable. NOTE that ALL OTHER FABRICS are made special for each order so they are not taken back.

ADDITIONAL PRICING INFORMATION ON ALL STYLES:

- Sizes 40, 42, and 44 \$1.00 pr.
- Sizes 46, 48, and 50 \$3.00 pr.

- No. 88 Navy tri-blend, poly, cotton, nylon \$39.98 pr.
- No. 87B1 Tri-blend poly, cotton, nylon. Black \$39.98 pr.
- No. 1190 11 oz. blue denim. (Note: 100% cotton) \$36.98 pr.
- No. 26R Stretch denim, 11 oz., poly/cotton. Med. blue \$35.98 pr.
- No. 63G Dacron denim gaberdine, 9 oz. \$35.98 pr.
 Black, dark gray, dark brown, navy, heather gray.
- No. 84D Dark navy dress denim, poly/cotton \$39.98 pr.
- No. 2 Navy twill, 9 oz., 65% poly, 35% cotton \$34.98 pr.
- No. 25 Black twill denim, 9 oz., 65% poly, 35% cotton \$34.98 pr.
- No. 55 10 oz. Solid navy denim, 100% cotton. Dark navy \$35.98 pr.
- No. 66 10 oz. Solid gray denim, 100% cotton \$35.98 pr.
- No. 6H 12 oz. Bull denim, 100% cotton. Dark gray \$39.98 pr.
- No. 72 10 oz. Black twill, 100% cotton \$35.98 pr.
- No. LW19 9 oz. Blue denim. 100% cotton \$34.98 pr.
- No. 22 10 oz. Black denim, 100% cotton \$35.98 pr.
- No. 92 100% cotton blue jean denim, 10 oz., Navy \$35.98 pr.
- No. 95R 10 oz. cotton. Lt. navy \$35.98 pr.
- No. 99 100% cotton blue jean denim, 14 oz. \$37.98 pr.
- No. 23 14 oz. denim, 100% cotton. Black \$37.98 pr.
- No. 77 Doeskin 100% polyester knit, dress. Black \$40.98 pr.
- No. 669 45% Light wt. wool and 55% polyester. Black \$59.98 pr.
- No. 5 Heavy wt. wool. Black \$64.98 pr.
- No. 44 NATURAL BROADFALLS. 9 oz. 100% cotton drill .. \$32.98 pr.

Natural color. All pants are made without hip pockets, button, and plier pockets and are unhemmed with 34" inseam.
 Waist sizes available: 28 to 44.

BOYS' BROADFALL PANTS.

Waist Size: 22, 24 and 26. State inseam. All fabric sewn into men's pants can be sewn into boy's sizes. Same prices on alterations and return policy. Pant prices are \$3.00 less than men's.

DENIM VEST. V-Neck. 14 oz., 100% cotton \$27.98 ea.

- Two outside pockets, snap closure. Navy.
 Sizes S, M, L, XL, XXL, XXXL.
 Alterations available on vest:
- Hook and eye closure \$2.00
- Button with button hole \$2.00
- Inside pocket only no charge
- Outside and Inside pocket \$2.00
- Quilted lining (cannot be returned) \$4.00
- Denim to match our pants (cannot be returned) \$4.00

ROPP OLD FASHIONED (Colonial) SHIRT

- Ropp shirts are pullover type with two wooden buttons for closing, wooden button cuff, lay down collar, full cut, long sleeve. Sizes S, M, L, XL.
- 6½ oz. shirting, 100% cotton \$34.98 ea.
 Natural, jade green, mint, peach, navy, and chambray blue.
- 5 oz. shirting, 100% cotton \$34.98 ea.
 Solid colors in natural, black and white.
- Flax linen, a bit heavier fabric. Ivory \$59.98 ea.
- Heavy wool flannel, 50% wool, 50% polyester \$69.98
 Navy, brown, dark gray, black.

OPTIONS FOR ROPP SHIRTS

- Additional Sizes: XXL, XXXL, XXXXL **\$3.00 extra**
- Drop Shoulder **\$5.00 extra**
- Longer Sleeve or longer body **\$5.00 extra**
- Slimmer cut in waist **\$1.00 extra**
- Stand up (Jefferson) collar **\$1.00 extra**
- No collar **no charge**
- Short Sleeved **no charge**

ROPP COLONIAL SHIRTS for BOYS **\$32.98 ea.**
 Same options as mens listed above. Sorry, no drop shoulder.
 Sizes S (6-8); M (10-12); L (14-16).

OLD FASHIONED NIGHT SHIRTS, cut below the knee.

Long sleeved. Sizes S, M, L, XL, XXL.
 100% cotton shirting. Natural color **\$44.98 ea.**

DICKIES BIB OVERALLS. 100% cotton **\$29.98 ea.**
 11½ oz. Navy denim. All with 32" inseam. Sizes 30-44.

No. 239 DICKIES PREMIUM INSULATED COVERALL.
 Black cotton duck, 6 oz. poly fill **\$74.98**
 Water repellent. Double knees, zipper to waist.
 Sizes (26-28) (30-32) (34-36) (42-44).

VAN HEUSEN DRESS SHIRTS. Long sleeved **\$19.98 ea.**
 35% cotton, 65% dacron. Permanent press. White.

Sizes	Sleeve	Sizes	Sleeve
14½	30, 31	16, 16½	32, 33, 34, 35
15, 15½	30, 31, 32, 33	17	34, 35

No. 1093 MEN'S DENIM WORK SHIRT. 100% cotton. Long sleeved.
 Navy. Sizes S, M, L, XL **\$19.98 ea.** Sizes XXL, XXXL **\$25.98 ea.**

No. 1013 MEN'S DENIM WORK SHIRT. 100% cotton. Short sleeved.
 Navy. Sizes S, M, L, XL **\$18.98 ea.** Sizes XXL, XXXL **\$22.98 ea.**

WOOLRICH MEN'S FLANNEL SHIRT. Heavyweight .. **\$39.98 ea.**
 100% cotton. Dark gray, navy, dark green or rust. Sizes M, L, XL.

DICKIES SHORT SLEEVE CHAMBRAY WORK SHIRT.
 60% cotton, 40% poly. Sizes S, M, L, XL **\$17.98 ea.**
 Sizes XXL, XXXL **\$19.98 ea.**

No. SPC DICKIES LONG SLEEVE CHAMBRAY SHIRT.
 40% poly, 60% cotton. S, M, L, XL **\$19.98** XXL **\$22.98 ea.**

THE RAILROAD SOCK

An American tradition since 1901

No. 991 THERAPEUTIC SOCK Pkg. of 2 **\$6.98**
 90% cotton, 10% nylon. No bind top for diabetics.
 Natural color. Sizes (9-11) or (10-13).

No. 1010 OVER-THE-CALF SOCK. True, graduated compression.
 80% nylon, 20% spandex. Black. Sizes 10½-11½ and 12-14 **\$8.98 pr.**

MEN'S 100% COTTON WORK SOCKS WITH HEELS.
No. M161 22 oz. weight **3-pack \$6.98 or \$25.95 doz.**
 White or gray. Sizes 10, 11, 12, 13.

No. 1075 MEN'S DRESS SOCK. 75% acrylic, 25% nylon .. **\$2.19 pr.**
 Black. Sizes 10-13.

No. M142 MEN'S DRESS SOCK. 80% cotton, 20% nylon .. **\$2.98 pr.**
 Black. Sizes 9-10, 10-11, 12-13.

No. M170 MEN'S DRESS SOCK **\$3.98 pr.**
 50% wool, 30% cotton, 20% nylon. Black. Sizes 9-10, 10-11, 12-13.

No. 344 MEN'S ATHLETIC CREW SOCKS.
 Full cushion foot. 85% cotton, 15% nylon. Black, navy or white.
 Sizes 10-13 **3-pack \$6.98 or 12 pr. \$25.95**
 Sizes 13-16 in black or white **2-pack \$5.98**

BOYS' WHITE CREW WITH GRAY FOOT.
 80% cotton, 14% nylon, 2% lycra. Full terry cushion.

No. 7095 Size 6-8½ In a two-pair band **\$1.79 pr.**
No. 7096 Size 9-11 In a two-pair band **\$1.79 pr.**

No. 393 YOUTH. 45% wool, 45% polypropylene, 10% nylon **\$3.98 pr.**
 Black. Sizes 6-8½.

No. 1021 MEN'S LONG DRESS SOCKS **\$2.98 pr.**
 Long stretch nylon hose. Black, navy, brown, khaki. Sizes 10-13.

No. 2012 HIGH PERFORMANCE OUTDOOR SOCK .. **\$10.98 pr.**
 70% Merino wool, 25% stretch nylon, 5% spandex.
 Heather gray color. Sizes Medium 5-8½; Large 9-12; XL 13-15.

No. 7300 MERINO WOOL SOCK **\$7.98 pr.**
 60% wool, 20% acrylic, 17% nylon, 3% lycra. Sizes 10-13.
 Gray with black heel / toe.

No. 2389 RAGG SOCKS. 80% wool, 19% nylon, 1% lycra **\$10.98 pr.**
 Brown tweed color. Sizes 8-12.

No. 1283-7267 SUPER HEAVYWEIGHT MEN'S SOCKS **\$11.98 pr.**
 84% premium wool, 9% acrylic, 7% nylon, 2% lycra.
 Gray with burgundy top. Sizes 10-13, 12-14.

No. 111 COLD WEATHER SOCK. 75% wool, 25% cotton **\$7.98 pr.**
 Natural. Sizes 10-11 and 12-13.

No. 321 HEAVY BOOT SOCK. 100% virgin wool **\$9.98 pr.**
 Natural leg, gray top. Sizes 9-11, 10-11½ and 12-13.

No. 863 TIMBER HEAVYWEIGHT BOOT SOCK **\$5.98 pr.**
 75% hi loft acrylic, 15% wool, 10% nylon. Gray. Sizes 10-13, 13-15.

No. 311 TRAPPER **\$7.98 pr.**
 Fully cushioned thermal over-the-calf sock.
 75% wool, 10% acrylic, 10% thermolite, 5% nylon. Gray. Sizes 10-13.

No. 902 MEN'S STRETCH TUBE SOCKS **\$1.79 pr. / \$19.95 doz.**
 85% cotton, 15% nylon. White. One size fits 9 to 15.

NO. 1907 LONG TUBE SOCK. 85% cotton, 15% nylon **\$2.98 pr.**
 White. Over-the-calf.

ROCKFORD (MONKEY) WORK SOCKS Pkg. of 2 **\$9.98**
 97% cotton, 2% acrylic, 1% spandex **\$55.50 doz.**
 Brown, blue, pink, yellow, dk. green.
 Sizes (S: 6-7); (M: 8-9); (L: 10-11); (XL: 12-13).

GLOVES – Men's and Boys'

No. 370 SURE GRIP. Rubberized palm. S, M, L, XL **\$4.98 pr.**

No. 3909 Husking/work glove. White poly. M, L, XL **\$1.49 pr.**

No. 19V V-lux lined, knit wrist, jersey. Dark colors **\$4.59 pr.**

No. 1665 Black fleece, black splitdeer palm. Sizes M, L, XL .. **\$7.98 pr.**

No. 1546 DEERSKIN glove **\$23.98 pr.**
 Black, with warm black lining. Sizes M, L, XL.

No. 409 Goatskin glove. Off White. M, L, XL **\$12.98 pr.**

No. 1544T Gold deerskin, thinsulate lined. L, XL **\$21.98 pr.**

No. 40PL Men's Split Calf, thinsulate lined. Brown. M, L, XL **\$17.98 pr.**

SUSPENDERS AND PARTS

MEN'S EXTRA STRONG SUSPENDERS. All 44" long.

All made with sweatproof webbing. All hardware is highest quality.

No. 550T ¾" tab. White, dk. brown, gray, black, navy **\$11.98 pr.**

No. 552C ¾" clip. Navy, white, dk. brown, gray, black **\$9.98 pr.**

No. 850T 1" tabs. Black or navy **\$12.98 pr.**

No. 852C 1" clips. Black or navy **\$10.98 pr.**

NO SLIP CLIP MEN'S SUSPENDERS, 44". Sweat-proof web.

No. 553NS ¾" web. Black **\$17.98**

No. 853NS 1" web. Black **\$18.98**

No. 953NS 1-½" web. Black **\$21.98 ea.**

SUSPENDER PARTS:

ITEM	¾"	1"	1½"
Adjuster	.45 ea.	.50 ea.	.75 ea.
Clips	.55 ea.	.60 ea.	.95 ea.
No Slip Clip	\$2.50 ea.	\$2.50 ea.	\$2.50 ea.
Plastic Back Pc., Black or white	.30 ea.	.30 ea.	.35 ea.
Metal Back Pc.	.45 ea.	.55 ea.	.80 ea.
Leather Tabs, Black or white	.45 ea.	.60 ea.	.75 ea.
Leather Cords, Black or white	\$1.45 ea.	\$1.50 ea.	\$2.50 ea.

BOYS' SOLID COLOR SUSPENDERS, 24", 28", or 36".

403T ¾" wide. Tabs. Black. Extra strong webbing **\$9.98 pr.**

No. 405C ¾" wide. Clips. Black. Extra strong webbing **\$8.49 pr.**

MEN'S WORK SUSPENDERS.

- No. 908C 1-1/2" web, 44". Clips. Black. Extra strong \$13.98 pr.
- No. 1417 1-1/2" web, 44". Leather tabs. Red \$15.98 pr.
- No. 903T 1-1/2" wide, 48" (Extra long). Tabs. Black \$15.98 pr.
- No. 908T 1-1/2" web, 44". Leather tabs. Black \$15.98 pr.
Extra strong webbing, leather cords in front.
- No. 904T 2" webbing, 50" long. Leather tabs \$16.98 pr.
All cotton, not elastic. Natural color.

SUSPENDER WEBBING BY THE YARD.

- Extra strong, sweatproof, 3/4" wide. Black, navy, white \$1.70 yd.
- Extra strong, sweatproof, 1" wide. Black, navy, white \$1.90 yd.
- Work web, 1 1/2". Black Excellent quality. Sweatproof \$2.49 yd.
- Non elastic web, 2" wide. 100% cotton. Natural \$2.98 yd.

MEN'S WALLET. Black leather. Thinner compact design \$9.98 ea.

BOW TIE. Tie on. Black \$5.98 ea.

MEN'S DRESS HANKY. 16" x 16". Poly/cotton. White \$.89 ea.

MEN'S DRESS HANKIES. Cotton. White Pkg. of 3 \$2.98

MEN'S DRESS HANKY. Poly/cotton. White Pkg. of 3 \$2.69

BANDANA HANDKERCHIEFS.

- 20" x 20". Navy, red, black, brown, dark gray \$1.39 ea.
- 17" x 17". Navy, red \$1.29 ea.

KID'S SWEATS. 50% cotton, 50% poly \$9.98 ea.

Black or navy. Sizes (S:6-8); (M:10-12); (L:14-16). State top or bottom.

MEN'S SWEATSHIRTS. Poly/cotton. Pullover. Black or navy.

Sizes S, M, L, XL. Reg. \$9.98 ea. Size XXL \$11.98 ea.

SWEATPANTS. 50% poly, 50% cotton. Black or navy.

Sizes S, M, L, XL \$10.98 ea. Size XXL \$13.49 ea.

HOODED SWEATSHIRTS. 50% poly, 50% cotton. Zipper closure.

Navy or black Sizes S, M, L, XL \$22.98 ea. Size XXL \$24.98 ea.

No. 777 MEN'S V-NECK T-SHIRTS. Hanes, 100% cotton. White.

Sizes S, M, L, XL. Pkg. of 3 \$11.98

No. 2135 MEN'S WHITE T-SHIRTS. Hanes, 100% cotton.

Sizes S, M, L, XL. Pkg. of 3 \$11.98

No. 453 SLEEVELESS T-SHIRT. Poly/cotton \$5.98 ea.

Sizes S, M, L, XL.

MEN'S UNDERWEAR. Sizes 30-44 waist.

No. 2249 Jockey type briefs. Hanes, 100% cotton. Pkg. of 3 \$6.98

No. M2060A FALL WT. DRAWERS. 100% cotton. Ankle length.

White. Sizes S, M, L, XL \$7.98 ea.

No. M2060TLS MEN'S FALL WT. SHIRT. 100% cotton. Long sleeve.

Matches No. M2060A Drawer. White. Sizes S, M, L, XL \$7.98 ea.

No. B2137 BOYS' SHORT SLEEVE SHIRTS. Hanes, 100% cotton.

Sizes 4-16. Pkg. of 3 \$6.98

No. B2249 BOYS' BRIEFS. Hanes, 100% cotton.

Sizes 4-16 Pkg. of 6 \$7.98

No. 372 MEN'S WHITE UNDERWEAR VESTS. Hanes, 100% cotton.

36-48 chest. Pkg. of 3 \$9.98

No. 3353 BOYS' RED UNIONSUIT \$15.98 ea.

50% cotton, 50% polyester. Sizes: 14-16 Large; 18-20 Extra Large.

BOYS' THERMAL UNDERWEAR. Poly/cotton \$7.98 set

Top & bottom (Sets only) Sizes 4-20.

MEN'S THERMAL UNDERWEAR. Long sleeve.

SHIRTS - Sizes 34 to 48 chest.

No. M75TLS 100% cotton. Off white. Good quality \$7.98 ea.

No. 9166L 50% polyester. Natural. Extra good quality \$7.98 ea.

No. 975LS Inside 100% hydroPur, Outside 30% Merino wool, 70% poly.

Gray. Sizes M, L, XL \$14.98 ea.

ANKLE LENGTH DRAWERS - Sizes 30-44 waist.

No. M75A 100% cotton. Off white. Good quality \$7.98 ea.

No. 9166D 50% polyester. Natural. Extra good quality \$7.98 ea.

No. 975DR Inside 100% hydroPur, Outside 30% Merino wool, 70% poly.

Gray, Sizes M, L, XL \$14.98 ea.

HENLEY SHIRT. 50% cotton, 50% poly \$15.98 ea.

2-button front, long sleeve. Heather gray and black.

Sizes: (Med.: 38-40); (Large: 42-44); (XL: 46-48); (XXL: 50-52).

No. C821 MEN'S LONG SLEEVE UNIONSUIT. 100% cotton, fall wt.

Long sleeve, ankle length. White. Sizes 34-52 \$17.98 ea.

No. 822 MEN'S RED UNIONSUIT. 100% cotton.

Long sleeve, ankle length. Sizes S, M, L, XL, XXL \$19.98 ea.

No. 94 "COLDPRUF" UNIONSUIT, 2-Layer Warmth \$48.98 ea.

Merino wool, nylon, and combed cotton on the outside and

100% combed cotton on the inside. Air is trapped between

layers for natural warmth. Red. Sizes M, L, XL.

Women's & Girl's Shop

BRA EXTENDERS. 1-hook, 2-hook, 3 or 4-hook Pkg. of 1 \$1.98

BONNETS. Black, all handmade. Sizes 15, 16, 17, 18, 19, 20 \$29.98

HAND FAN. Black fan with floral design \$2.98

FOLDING UMBRELLA. 9" long when closed \$7.98

LADIES' HAIRNETS. Black, brown, blonde or white \$.69 ea.

No. 40101 TORTOISE SHELL HAIRPINS. Pkg. of 10 \$2.49 pkg.

CHILDREN'S ANIMAL HANKY \$.79 ea.

FLORAL HANKIES. Cotton, 12"x12". Pkg. of 3 .. \$2.29 pkg.

LADIES' HANDKERCHIEFS.

F642 10 1/2" square. Cotton. White embroidery. Pkg. of 2 \$2.49

F1618 11" square. 100% cotton. Pkg. of 2 \$2.49

Assorted colors embroidery.

LADIES' HOSIERY - 8 1/2 to 11

No. 2005 FOOT HOSE. (Footlets) No binding or slipping \$.98 pr.

Nylon. Machine washable. Ridgeless top. Beige only. Sizes 9-11.

LADIES' KNEE HI NYLONS. Sizes 8-1/2 to 11.

No. 190 Knee high, SUPPORT, 85% nylon, 15% lycra spandex, sheer.

Black \$1.49 pr. or \$15.95 doz.

No. 6355 Sheer knee high with toe. Black and off black \$1.79 pr.

No. 6351 Queen Size. Same as above \$1.79 pr.

No. 6361 Sheer knee high with support. Black and off black .. \$2.19 pr.

No. 6380 Sheer knee high with lycra. Black \$2.19 pr.

No. 6423 Lycra opaque knee high. Black \$2.98 pr.

No. 6424 Queen Size. Same as above \$2.98 pr.

No. 175 Seamless sheer. Black only \$.98 pr. or \$10.50 doz.

No. 180 Seamless opaque. Black \$1.09 pr. or \$11.50 doz.

No. 803 NEW CONTROL TOP PANTY HOSE. Heavy 70 denier.

92% nylon, 8% lycra. Black.

Sizes Extra Large (140-190 lbs.) \$4.98 pr.

No. 5701 MATERNITY PANTY HOSE \$6.98 ea.

Matte opaque leg, lace tummy panel. Black.

Size A - 5'0" to 5'5" (110-170 lbs.); Size B - 5'0" to 5'5" (140-200 lbs.);

Size C - 5'5" to 5'11" (140-200 lbs.); Size D - 5'5" to 5'11" (170-230 lbs.)

LADIES' PANTY HOSE

No. 4527 Control top, lycra extra wear leg \$5.98 ea.

20-30 den., sandalfoot. Black

Size 1 (100-120 lbs.); Size 2 (120-135 lbs.); Size 3 (135-150 lbs.);

Size 4 (150-170 lbs.); Size 2+ (fuller hips-145-160 lbs.).

No. 4757 Tummy and hip control and thigh shaper \$6.49 ea.

Lycra leg, 30-40 den., reinforced toe. Black

Size 1-2 (100-135 lbs.); Size 3-4 (135-170 lbs.);

Size 2+ (fuller hips-145-180 lbs.).

- No. 4760-8116** Very firm tummy toning panel \$7.98 ea.
 Extra wear lycra leg, 30-40 den., reinforced toe. Black.
 Size 1-2 (100-135 lbs.); Size 3-4 (135-170 lbs.);
 Size 2+ (fuller hips-145-180 lbs.).
- No. 8040** Black opaque, microfiber lycra, control top \$6.98 ea.
 Size 1-2 (110-135 lbs.); Size 3-4 (135-170 lbs.); Size 2+ (145-185 lbs.).
- No. 4808** (Same as 8040 above) \$6.98 ea.
 Size 1X-2X (180-210 lbs.); 3X-4X (210-240 lbs.); 5X-6X (240-270 lbs.).
- No. 200** Nylon. Black. One size fits all \$3.98 ea.
- No. 800** Nylon. Black, opaque. Up to 160 lbs. \$1.39 ea.
- No. 900** Nylon. Black, opaque. Queen size to 225 lbs. \$1.98 ea.
- No. 1805 FULL SUPPORT STOCKING** \$3.98 ea.
 70% lycra leg, reinforced toe. Off Black.
 Sizes (A: 5'-5'3"); (B: 5'3"-5'6"); (C: 5'6"-5'8");
 (D: 5'8"-5'10"); (E: 5'10"-6'2").

LADIES' STRETCH NYLON HOSIERY.

- No. 280** Opaque, thigh high \$1.39 pr. or \$14.95 doz.
 Black only. One size.
- No. 865 BULK ACRYLIC CABLE KNIT KNEE-HIGH STOCKING.**
 70% acrylic, 30% nylon. Black or gray.
 Sizes 3-4½ \$2.39 pr. Sizes 4½-6 \$2.69 pr.
 Sizes 6-7½ \$2.98 pr. Sizes 7½-9 \$3.29 pr.
 Sizes 9-11 \$3.59 pr. Sizes 9½-12 \$3.98 pr.
 Sizes 11-14 Black only .. \$4.19 pr.

CABLE PATTERN ORLON TIGHTS. White.

- Toddler Size 1-3 \$1.98 pr.
 Small Size 4-6; Medium 7-10 \$2.29 pr.
- No. 595 100% NYLON STRETCH TIGHTS.** Black and tan.
 Sizes 1-3 \$1.49 pr. Sizes 4-6 \$1.98 pr.
 Sizes 7-14 \$1.98 pr.

POLYESTER HEAD SCARF. 27"x27". Black \$4.98 ea.

- No. 1600 ACRYLIC SCARF. 27"x27" \$3.69 ea.**
 White, black, royal, navy, dk. green, turquoise, copen.

LADIES CARDIGAN SWEATSHIRTS \$19.98 ea.

- 50% cotton, 50% polyester. 3 button front with two front pockets.
 Black. Two sizes: (S-M) or (L-XL).

BLACK SHAWLS. 100% wool.

- Berwick Squares, 72"x72" approx. \$91.98 ea.
 Berwick Doubles, 136"x68" approx. \$159.98 ea.
 Girl's, 58"x58" approx. \$73.98 ea.
 Child's, 48"x48" approx. \$63.98 ea.

GIRLS', WOMEN'S UNDERWEAR

ALL UNDERWEAR LISTED IS WHITE.

NO. 2050V, 2050S, 2050L RUN SMALL IN SIZE.

ORDER 2 SIZES LARGER FOR PROPER FIT.

No. 32-800 LADIES' BRIEFS. 100% cotton. Band leg. White.

- Sizes 6, 7, 8, 9, 10 \$3.49 ea. Sizes 11 & 12 \$3.98 ea.

No. BR32 LADIES' BRIEFS \$3.98 pr.

- 100% cotton. TRUNK LEG. White. Sizes 5-11.

100% COTTON FULL SLIP. Tall - 43" long. White.

- Sizes 34-40 \$12.98 ea. Sizes 42-46 \$13.49 ea.

No. 200B FULL SLIP. 65% polyester, 35% cotton.

- Adjustable straps. White.

- Sizes 34-42 \$10.98 ea. Sizes 44-46 \$11.59 ea.

No. 00 WOMEN'S WHITE FULL SLIP. 100% nylon tricot.

- Adjustable straps. Machine washable. Shadow panel.

- Bust sizes 32-46. State bust size wanted.

- State tall (43") or average (41") length.

- Size 32-40 \$13.49 ea. Size 42-46 \$13.98 ea.

100% COTTON HALF SLIP. 29" length \$10.98 ea.

- White. Waist Sizes 24-44".

No. 11 WOMEN'S WHITE HALF SLIP \$10.98 ea.

- 100% nylon tricot. Machine washable. Shadow panel.

- 24-44" waist. 29", 31", 33" lengths. Give waist & length size wanted.

No. 7127 RIB-KNIT FULL SLIP. 100% cotton \$7.98 ea.

- White. Sizes S (32-34); M (36-38); L (40-42); XL (44-46).

GIRLS' WHITE FULL SLIPS. Poly/cotton. Built-up shoulders \$6.98 ea.

- Size 7, 26½ chest, 29" length Size 10, 29 chest, 33" length

- Size 8, 27½ chest, 31" length Size 12, 30 chest, 35" length

No. 4209 NURSING BRA. Seamless design \$11.98 ea.

- One hand release cup. 92% cotton, 8% spandex. White.

- Sizes: B cup 32-40; C cup 34-40; D cup 36-40.

PANEL RIBBED KNIT UNDERWEAR. 100% cotton. White.

- No. 151P-1001** Ladies' mid-thigh snuggies. Sizes S, M, L, XL \$3.98

- No. 151PLL** Ladies' knee length snuggies. Sizes S, M, L, XL \$4.59

- No. 151LSV** Ladies' long sleeved shirt. Sizes S, M, L, XL \$5.49

- No. 151PA** Ladies' ankle length pant. Sizes S, M, L, XL \$5.49

No. 2050V LADIES' SLEEVELESS VESTS. 100% cotton.

- Sizes 36-44 \$3.98 ea. Sizes 46-50 \$4.98 ea.

No. 2050S LADIES' SHORT SLEEVE SHIRTS. 100% cotton.

- Round neck. Pullover. No buttons.

- Sizes 36-44 \$4.98 ea. Sizes 46-50 \$5.49 ea.

No. 2016LS 100% THERMAL TOP. 100% cotton. White \$6.98 ea.

- Bust sizes: S: (32-34); Med: (35-37); L: (38-40); XL: (41-43).

No. 2016D 100% THERMAL PANT. 100% cotton. White .. \$6.98 ea.

- Hip sizes: S: (34-36); Med: (37-39); L: (40-42); XL (43-45).

No. M2050B CHILDRENS' BLOOMERS. White \$5.98 ea.

- 100% cotton rib knit. Sizes XS (2-4); L (14-16).

Infant's Shop

Diaper Pins Pkg. of 4 \$1.49

No. 75409 GERBER Baby Pants. Vinyl. S, M, L, XL Pkg. of 2 \$3.49

GERBER BABY SHIRTS. White. Package of 3.

- Sizes: 3 months to 12 months. Give age and weight for size.

- Pull-on baby shirt. Pkg. of 3.. \$4.98

- Snap-on baby shirt. Pkg. of 3.. \$5.98

No. 88869 Snap On Starter Shirt. 100% cotton. White \$2.29 ea.

- Short Sleeve. Newborn to 14 lbs., Small 15-18 lbs., Med. 19-26 lbs.

GERBER gauze diaper, 100% cotton, 24 x 27 10-pack \$19.98

GERBER prefold diapers, 100% cotton 10-pack \$22.98

BABY'S RECORD BOOK. Hard cover, 64 pages \$8.98

Boot & Shoe Store

SADDLE SOAP. 3 oz. can. Leather cleaner \$2.59

LEATHER SHOE LACES. 72", High grade leather \$2.98 pr.

BRAIDED RAWHIDE LACES. 48" \$7.99 pr. 63" \$8.99 pr.

CLOTH SHOE LACES. 18", 21", 24", 27", 30", 36". Black .. \$6.99 pr.

36" heavy \$7.99 pr. 40" \$9.98 pr.

CLOTH SHOE LACES. 40". White \$9.98 pr.

72". White or black \$1.49 pr.

MEN'S DRESS SHOE

AMISH TRADITIONAL DRESS SHOE \$198.98 pr.

High top, sable tip, black calfskin leather upper, leather sole with 1/2" rubber heel. Sizes 7-12. EE only.

WOMEN'S WORK AND DRESS SHOES

OLD FASHIONED HIGH TOP SHOE for ladies \$189.98 pr.

Leather upper, leather sole, all black. Medium width. Sizes 5-10. NOTE: order one size smaller than normal.

SOFTSPOTS FOR WOMEN BY LOWELL SHOE CO.

No. 122401 SUPREME. Black, plain toe \$68.98 pr.

4 eyelet, wedge sole, steel shank, cushion insole. Wide width in sizes 6-11.

No. 11335 PERFORMANCE WALKER..... \$89.98 pr.

Soft tumbled leather. 5 eyelet. Removable inlay, extra depth for custom orthotics, padded collar and tongue. Available in black or white. State color. Sizes 5-11 in medium or wide width.

MEN'S BOOTS

TRACTION STUDS. Fits easily over shoes \$19.98

Sure grip protection on icy surfaces. Tungsten carbide studs. Black. Sizes (7-9) (10-12)(13-15).

CARBIDE STUD REPLACEMENT KIT for above \$6.98

SERVUS RUBBER "OUTDOOR COMFORT SERIES"

Ideal for farm, garden, hunting. These BLACK shoes and boots have a removable, washable insole, a wrap-around self-cleaning rubber outsole. The boots have a stretch-fit, top-line binding top for snug fit. Available in men's full sizes 5-13; women's full sizes 6-11.

No. 67511 Black slip-on mid boot \$64.98 pr.

No. 67501 Black slip-on high boot \$74.98 pr.

RUBBER FOOTWEAR. Sizes 6-13.

Guide, Black, extra high, 2-buckle work rubber, over-the-shoe \$59.98 pr.

No. 89301 Packlite, 16", Heavy vinyl boot, over-the-shoe \$25.98 pr.

Duluth, Black, 5-buckle over-the-shoe boot \$69.98 pr.

Fleecefoot, Heavy duty, fleece-lined, zipper arctic \$69.98 pr.

Utah, 14", Black, over-the-shoe, strap boot, LaCrosse \$59.98 pr.

Black pull-on knee boot, over-the-foot, rubber, insulated \$79.98 pr.

No. 412010 Black zipper arctic, over-the-shoe. Sizes 7-12 \$52.98 pr.

ICEMAN. 12" high, double insulated, polypropylene liner,

leather upper, waterproof rubber bottom, fiberglass shank, tractor tread outsole. Rated to 80 degrees below zero.

From LaCrosse. Black. Sizes 7-15 \$129.98 pr.

TINGLEY STRETCH RUBBERS AND BOOTS

No. 11614 TODDLER \$16.98 pr.

Over-the-foot. Black soft PVC. Sizes 7-13

No. 11614 YOUTH \$18.98 pr.

Over-the-foot. Black soft PVC. Sizes 1-6.

No. 1000 MEN'S TOE RUBBER \$18.98 pr.

Stretch rubber, worn over-the-shoe. Sizes 6-13. Black

No. 1300 MEN'S \$22.98 pr.

Worn over-the-shoe, 4" high. Black stretch rubber. Sizes 6-15.

No. 1400 MEN'S \$32.98 pr.

Worn over-the-shoe, 11" high. Black stretch rubber. Sizes 6-15.

No. 31144 MEN'S AND YOUTH \$23.98 pr.

Over-the-foot, black PVC, 14" high. Simple farm boot. Sizes 3-13.

No. 35121 PVC 11" High \$25.98 pr.

Over-the-shoe. Black. Sizes 6-15.

Hard-To-Find Corner

BEESWAX AND HOLDER \$1.59

BONNETBOARD. Good for quilt patterns and templates.

Waterproof. Black or white. 24"x24". Non-breakable.

Because of shipping costs this has to be mailed by the

dozen. 12 sheets \$24.50

BLACK BONNET WIRE. 60 yard spool \$27.98

No. 8 LARGE BLACK BUGGY UMBRELLAS \$19.98 ea.

BONING. 3/8" - White or black \$98 yd.

WOODEN SPOOL HOLDER. Homemade \$4.98 ea.

POP-UP, FOLDING UMBRELLA. Black or Navy \$7.98 ea.

Closet

WOOLRICH HUDSON BAY "POINT" BLANKETS.

Made since 1779. Woven in England of pure wool. Color: Multi stripe.

4-point (double) 72"x90" \$298.00 ea.

6-point 90"x100" \$398.00 ea.

WOOLRICH BLANKETS, CIVIL WAR SERIES.

85% wool, 15% nylon.

Fort Sumpter, 60x72. Tan \$99.98 ea.

Gettysburg, 60x84. Gray \$85.98 ea.

Calvalry, 66x80. Navy \$99.98 ea.

Artillery, 70x84. Red \$119.98 ea.

BUGGY ROBES. 56"x66" \$89.98

Fur on both sides with insulated lining.

Black, dk. green, brown, wine, lt. navy, gray, royal.

UTILITY WASHCLOTHS Pkg. of 5 \$5.50

100% cotton, 12"x12". White ribbed terry.

FLOUR SACK TOWELS Pkg. of 3 \$5.98 or \$21.95 doz.

100% cotton, 34"x17". White, "Cook's Towel."

Ideal for poaching, crafts, cleaning, straining.

DISH TOWELS. 100% cotton, 27"x19" \$3.19 ea.

Book & Game Store

BANANAGRAMS. A game played anywhere \$14.95

Letters are in a zippered, yellow banana-shaped pouch.

PAIRSINPEARS. A fun word game played with 4 alphabets \$14.95

Each alphabet in a different pattern. Letters are in a zippered, green pear-shaped pouch.

APPLELETTERS. The new domino game \$14.95

You don't connect the dots . . . you connect the letters.

Letters are in a zippered, apple red-shaped pouch.

DUTCH BLITZ CARD GAME \$8.98

UNO CARD GAME \$8.98

SKIP BO CARD GAME \$12.98

HOW TO WRITE YOUR PERSONAL FAMILY HISTORY \$11.95

By Katie Runk Wiebe. Paperback, 222 pages.

A HISTORY OF THE AMISH. Steven M. Nolt, 318 pages \$9.95

QUILTS AMONG THE PLAIN PEOPLE. 96 pgs. \$6.95

Paperback. Informational.

STASH ENVY. 142 pgs. Paperback, A book of humor \$9.95

EASY WAYS TO MAKE YOUR SEWING FIT \$24.98

Sewing and pattern alterations. Mary Ellen Miller, Arcola, IL.

132 pages, spiral bound.

FIX IT AND ENJOY IT. 284 pgs. Paperback	\$15.95
Stove Top and Oven cooking.	
FIX IT AND FORGET IT COOKBOOK. 284 pgs. Crock Pot	\$14.95
THE BEST OF AMISH COOKING. 224 pgs. Paperback	\$15.95
AN AMISH TABLE. 48 pgs. Hard Cover. Nice gift	\$7.95
AMISH COUNTRY COOKBOOK, Vol I. 600 recipes	\$12.98
AMISH COUNTRY COOKBOOK, Vol II. 600 recipes	\$12.98
AMISH COUNTRY COOKBOOK, Vol III. 600 recipes	\$12.98
AMISH COUNTRY COOKBOOK, Vol IV. 600 recipes	\$12.98
HOUSE CALLS AND HITCHING POSTS. Paperback	\$9.69
Stories from Dr. Elton Lehman's career among the Amish. 358 pages.	

Sewing & Quilting Shop

BATTINGS / PILLOW FORMS

HEIRLOOM NATURAL 100% COTTON BATTING.	
Washable, chemical free, non-allergenic.	
45"x60"	\$10.98 90"x108"
HEIRLOOM 100% WOOL BATTING. Washable. 90"x108"	
FAIRFIELD BATTING. Very high quality, polyester.	
Hi-loft, comforters, tied quilt, 90"x108"	
FAIRFIELD BATTING. Extra loft. Polyester bonded.	
For most traditional quilting needs.	
45"x60"	\$8.98 110"x110"
81"x96"	\$18.98 120"x120"
90"x108"	\$19.98
FAIRFIELD BATTING. Low loft. Polyester, bonded.	
For tiny quilting stitches and craft projects	
45"x60"	\$5.98 90"x108"
81"x96"	\$14.98 120"x120"
MOUNTAIN MIST BATTING.	
45"x60" Polyester	\$8.98 72"x90" Polyester
81"x96" Polyester	\$15.98 90"x108" Polyester
HOBBS POLY/DOWN PILLOW FORMS.	
12"x12"	\$4.98 16"x16"
14"x14"	\$5.98 18"x18"

BELT STIFFENERS

BANROL SUPER STRETCH. No roll elastic.	
3/4"	\$1.29 yd. 1"
1-1/2"	\$1.69 yd. 2"
BANROL (Non-Stretch). White.	
3/4"	\$.69 yd. 1"
1-1/2"	\$.89 yd. 2"
WAISTBAND MATERIAL	
With stiffening and grip-a-text. Black.	

BIAS TAPES

SINGLE FOLD BIAS TAPE. 1/2" x 4 yds.	\$1.35
DOUBLE FOLD BIAS TAPE. 1/4" x 4 yds.	\$1.35
WIDE BIAS TAPE. 7/8" x 3 yds.	\$1.39
DOUBLE FOLD QUILT BINDING. 7/8" x 3 yds.	\$2.65
SATIN BLANKET BINDING. 2" x 4-3/4" yds.	\$6.50

BOBBINS

BOBBINS. Metal 4 ct.	\$1.29 pkg.
Plastic 10 ct.	\$2.29 pkg.

BUTTONS

NAVY "P" COAT BUTTONS. With anchor inset. 1-1/4"	\$.25 ea.
OVERCOAT BUTTONS. Black. 1-1/8"	\$.15 ea.
WORK PANT BUTTONS. For broadfalls. Elkhorn color	\$.98 doz.
PANT BUTTONS. (4 hole).	
Black plastic work buttons for broadfalls	\$.98 doz.
Dress pant buttons. Navy, black	\$.98 doz.
SUIT COAT BUTTONS. Black, 3/4"	\$1.19 doz.
SHIRT BUTTONS. White	\$.60 doz.
COVERED BUTTON KITS. 1/2", 5/8", 3/4", 7/8"	\$1.29 pkg.
BUTTONS BY THE CARD. 3/8", 1/2", 3/4". State color ..	\$1.50 card

ELASTICS

COTTON ELASTIC. All widths. Natural color.	
1/4 inch	\$.29 yd. 3/8 inch
RAYON ELASTIC BRAID. White or black.	
1/8 inch	\$.19 yd. 1/2 inch
1/4 inch	\$.29 yd. 3/4 inch
3/8 inch	\$.39 yd. 1 inch
NO ROLL ELASTIC. White. 1/2 inch	
3/4 inch	\$.79 yd. 1 inch
PAJAMA ELASTIC. White. 3/4 inch	

HOOK & EYES

HOOKS AND EYES - BLACK.	
No. 2	\$.59 doz. No. 4
No. 3	\$.69 doz. No. 6
PANT HOOK & EYES. Black or silver	
Pkg. of 4 \$1.49 pkg.	
SILVER DRESS HOOKS. Sizes 0, 1, and 2	
\$.89 pkg.	

MARKING PENS

MARKING PEN. Washes off with water	\$3.89 ea.
TAILORS CHALK with plastic holder. White	\$2.39 ea.
DRESSMAKER'S CHALK MARKING PENCIL	\$1.79 ea.
State if you want white or colored.	

NEEDLES

SCHMETZ NEEDLES - see listing below.	
For leather, Size 14, 5 count	\$3.98 pkg.
Stretch, Size 11 or 14, 5 count	\$3.98 pkg.
Jean/Denim, Size 16, 5 count	\$3.49 pkg.
Universal, Asst. Sizes 10, 12, 14, 5 count	\$2.49 pkg.
Universal, Size 10 or 12 or 14, 5 count	\$2.49 pkg.
Ball point, Size 12 or 14, 5 count	\$2.59 pkg.
EMBROIDERY NEEDLES. Sizes 1-5, 7 & 8	
\$.89 pkg.	
SHARPS NEEDLES. Sizes (1-5), (3-9), (5-10), 7, 8 or 9	
\$1.29 pkg.	
QUILTING NEEDLES. D.M.C. No. 7, 8, 9 or 5/10 assorted	
\$1.19 pkg.	
YARN DARNERS. 14/18	
\$1.19 pkg.	
NEEDLE REPAIR KIT	
\$1.39 pkg.	
Multi-purpose straight and curved needles for all types of repair.	
SELF-THREADING NEEDLES. Asst. sizes in pkgs.	
\$1.39 pkg.	
NEEDLE THREADER	
\$1.29	

PINS

STEEL PLATED STRAIGHT PINS					
No.	Size	Head Type	Length	Count	
1079-26	17	flat	1-1/16"	400	\$2.19
1080-22	20	flat	1-1/4"	350	\$2.19
1072-126	17	flat	1-1/16"	900	\$3.09
1670-79	17	dipped	1-1/16"	200	\$1.98
61		dipped glass head	1-3/8"	250	\$4.98
1657	24	dipped	1-1/2"	75	\$1.79
SAFETY PINS. 3/4", 7/8", 1", 1-1/2", 2". One size per card ..					
\$1.19 card					
No. 1706 IRIS SUPERFINE PINS. 1-1/2", 500 ct.					
\$9.59 pkg.					
GRABBIT. Magnetic pin cushion					
\$8.98 ea.					

STRAIGHT PINS. Put up in 1/2 lb. boxes. Size 17, 1" long **\$6.98 box**
 Size 20, 1-1/4" long ... **\$6.98 box** Size 24, 1-1/2" long **\$6.98 box**
TWIST PINS Pkg. of 10 **\$2.19**
 Secures furniture, slipcovers, and arm covers.

RIBBONS

GROSGRAIN RIBBON. 100% polyester. White or black.
 3/8 inch **\$.22 yd.** 5/8 inch **\$.30 yd.**
 7/8 inch **\$.35 yd.** 1-1/2 inch **\$.59 yd.**
POLYESTER SATIN TAFFETA RIBBON. White or black.
 1/4 inch **\$.20 yd.** 7/8 inch **\$.35 yd.**
 3/8 inch **\$.22 yd.** 1-1/2 inch **\$.59 yd.**
 5/8 inch **\$.30 yd.**

SCISSORS

FOLDING SCISSORS **\$1.79 ea.**
GINGHER SCISSORS. The best scissors available today.
No. GNS4, 4" lt. weight, thread clip. Black **\$13.59 ea.**
No. G7, 7" bent trimmer, knife edge **\$25.98 ea.**
No. G8, 8" bent trimmer, knife edge **\$28.98 ea.**
No. G7P, 7-1/2" pinking shears **\$35.98 ea.**
No. G4, 4" embroidery scissors **\$20.98 ea.**
No. G5, 5" sewing scissors, knife edge **\$22.98 ea.**
No. G6R, 6" applique scissors **\$26.98 ea.**
No. G8L, 8" knife edge, LEFT HAND **\$28.98 ea.**
No. G-10, 10" knife edge **\$39.98 ea.**

SNAPS

No. 5 MIGHTY SNAPS. (For heavy duty snap fastening).
 7 sets (no tool) Nickel or white **\$4.59**
 7 sets (no tool). Black or navy **\$4.59**
 Tool only **\$1.59 ea.**
No. 24P DRITZ PLIER KIT. For #5 snaps **\$15.98**
No. 16P DRITZ PLIER KIT. For decorative snaps **\$15.98**
NYLON SNAPS. Blends with any fabric. Pkg. of 18 **\$1.19**
SNAP FASTENERS. Sew-on. Black. Size 1 **\$1.00 doz.**
 Size 3 **\$1.50 doz.** Size 4 **\$1.95 doz.**
 Size 7 **\$2.50 doz.** Size 10 **\$4.50 doz.**
SNAP FASTENERS **\$1.19 card**
 Silver or black. Sew-on kind. Sizes 4-0, 3-0, 2-0, 1-0, 1, 2, 3, 4.

THIMBLES

THIMBLES. Small, medium, large. Ridged top **\$1.29 ea.**
NIMBLE THIMBLE. Soft. S, M, L **\$3.29 ea.**
LEATHER THIMBLE. One size fits all **\$2.98 ea.**

THREADS

No. 230 400 yd. SPOOLS. Polyester **\$1.59 spl. or \$17.75 doz.**
 Black, white, natural.
GUTERMAN THREAD. Basic colors. Specify spool size.
 110-yd. **\$1.40** 273-yd. **\$2.85** 547-yd. **\$4.35**
THREAD, Coats & Clark. TO MATCH DRESS MATERIALS.
No. S910 General purpose. Poly covered poly. 250 yd. **\$2.15**
 Basic colors.
No. S970 ALL PURPOSE THREAD. Cotton **\$1.59 spool**
 Basic colors.
No. S964 EXTRA STRONG UPHOLSTERY THREAD **\$1.70 spool**
 Nylon. Colors: White, black, dusty green, natural, hemp,
 taupe, dk. brown, dark navy.
No. S950 HEAVY DUTY POLY COVERED POLY **\$1.30 spool**
 Colors: Black, white, gray, navy, red, natural, soldier blue,
 dk. khaki, dk. sage green.
No. S920 BUTTON AND CARPET THREAD **\$.98 spool**
 Cotton covered poly. Colors: Black, white, red, navy, cream,
 Dogwood, dk. brown, gray.
EMBROIDERY FLOSS. D.M.C., 9 yd. skeins (all colors) **\$.55 ea.**
No. S995 TRANSPARENT. Polyester. Clear and smoke **\$1.80**

No. S940 FINE. Poly-covered poly. A few basic colors **\$1.60**
CONE THREAD. 6,000 yds. Tex 60. Cotton core spun **\$39.98 cone**
 Color: Black

12,000 YD. CONE THREAD. Cotton. Size 50 **\$39.98 cone**
 Color: White or natural.

SERGER THREAD. Maxilock 3,000 yds. **\$3.69 spool**
 Colors: Black, white, gray, lt. gray, navy, lt. blue, yellow,
 pink, maroon, red, natural, cream.

No. S960 HAND QUILTING. Cotton covered poly **\$2.20**
 Colors: Black, white, yellow, red, brown, Dogwood, cream,
 natural, forest green, green linen, navy, Barberry red, blue.

No. S975 MACHINE QUILTING. 100% Egyptian cotton **\$1.80**
 Colors: Black, white, winter white, navy, red, gold, natural,
 dk. brown, khaki.

"METTLER" - Better quality QUILTING THREAD **\$5.79 ea.**
 500 yds. Colors: White, natural, black.

CROCHET THREAD. 100% cotton.
 Size 10, 400 yd. **\$2.59 spool**
 Colors: White, natural, blue, pink, yellow, lt. green, dk. green,
 brown, aqua, turquoise, black, celery green, purple, lavender,
 violet, gold, pumpkin, peach, rose, navy, lt. blue, med. blue,
 red, burgandy and (varigated in pinks, lavenders, lt. pastels).

Size 3, 150 yd. Colors: White and natural **\$2.19 spool**
 Size 20, 400 yd. Colors: White and natural **\$2.69 spool**
 Size 30, 500 yd. Colors: White and natural **\$2.69 spool**

YARN - BERNAT SUPER VALUE
 Acrylic, 426 yd. skein, 4 ply, 7 oz. Standard colors **\$3.98 skein**

SUGAR & CREAM YARN
 Cotton, 120 yd. skein, 2.5 oz.
 Lots of colors to choose from **\$2.49 skein**

VELCRO

VELCRO. Fastening tape, 3/4". Sew on. Black or white **\$.98 ft.**
VELCRO. 3/4". Sticky back. Black, white, navy, beige **\$1.69 ft.**
VELCRO. 2". Sticky back. INDUSTRIAL. Black and white .. **\$2.69 ft.**

ZIPPERS

HIDDEN ZIPPERS. Most colors. 7 to 9" **\$1.79**
 12 to 14" **\$2.09** 20 to 22" **\$2.39**

MISCELLANEOUS

No. 72F 12" x 12" WOOL FELT **\$3.09 ea.**
 Colors: Black, white, dk. gray, gray-khaki, dk. brown,
 saddle brown, dk. sage, spruce, olive, kiwi, orange, gold,
 teal, aqua, dk. blue, lt. blue, red, rhubarb, purple, orchid,
 red rose.

SNAG NAB-IT. Removes snags in knits **\$1.49 ea.**

BALL POINT BODKIN **\$2.09 ea.**
 Great for inserting elastic in casings or ribbon weaving.

No. 638 SEAM RIPPERS **\$1.79 ea.**

No. 641 SEAM RIPPER with light **\$4.59**

OLFA ROTARY CUTTER. Makes quilt cutting easy.
 1 inch **\$11.59** 2 inch **\$16.39**

Replacement blades, 1 inch 2 pack **\$6.79**

Replacement blades, 2 inch 2 pack **\$11.98**

OLFA Replacement Blades. For 2 inch cutter 5 pack **\$27.19**

SEWING GAUGE. With measurements and slider **\$1.49 ea.**

No. 104 SEWING MACHINE BELTS **\$4.98 ea.**
 Fits all treadle machines.

IRON-ON PATCHES. Dark navy, lt. navy, black **\$1.19**

TWILL TAPE. Polyester. White or black **\$1.40**

1/4", 4 yds on pc., 1/2", 3 yds. on pc. **Be sure to state width wanted.**

STITCH WITCHERY. Bonding web, 3/4" x 20 yd. **\$1.98 pkg.**

RED TOMATO PIN CUSHION. Traditional **\$.89 ea.**

CUFFS FOR JACKETS. Black or navy **\$2.98 pr.**

DRESS SHIELDS. White or black **\$2.49 pr.**

SHOULDER PADS. 100% polyester, washable **\$2.98**

RETRACTABLE TAPE MEASURE. Spring loaded **\$4.98 ea.**



**QUILTING FABRICS, BROADCLOTHS,
AND MUSLINS**

KONA, 45" . 100% cotton solids	\$6.49 yd.
White, black, charcoal, steel, med. gray, lt. gray, oyster, natural, parchment, earth, chestnut, chocolate, brown, espresso, avocado, artichoke, cactus, peapod, chartreuse, grassgreen, lime, jungle, clover, pear, aloe, honeydew, asparagus, ice frappe, spectrum, glacier, teal, cyan, lagoon, peacock, lake, water, pacific, ocean, navy, blueberry, cornflower, denim, deep blue, lapis, amethyst, thistle, crocus, hibiscus, dk. violet, purple, cerise, bright pink, pale flesh, burgundy, rich red, red, kumquat, mango, tangerine, orange, honey, banana, maze, buttercup.	
PREMIUM KONA, 45" . 100% cotton	\$7.98 yd.
Jet black, ultra white.	
YODER BROADCLOTH, 60" . 35% cotton, 65% poly	\$3.98 yd.
White, natural, royal, yellow, peach, navy, dk. green, black, wine, red, brown, lt. blue, lt. pink, dk. pink, teal, jade, purple, turquoise, gold.	
IMPERIAL BROADCLOTH, 60"	\$5.49 yd.
65% dacron, 35% cotton. Very nice. White only.	
TREMODE BROADCLOTH, 45" . Machine washable	\$3.29 yd.
65% polyester, 35% cotton. This is beautiful material. Less than 1% shrinkage. Like broadcloth. SOLIDS: White, navy, pink, black, royal, yellow, orange, cream, brown, lt. blue, dk. green, dk. yellow, red, kelly green, cream, purple, med. green, turquoise, lilac, parchment, tan, lt. green, gray, chambray blue, magenta, med. blue, spearmint, lime, brown.	
SOUTH SEAS, RED ROOSTER, HENRY GLASS, R.J.R., MAYWOOD, TIMELESS TREASURE & MORE, 45"	
100% cotton	\$8.98 yd.
For samples order by color group. Lt. to med. blue, dk. and navy blue, pink/mauve, maroon/fuschia, purple/lavender, brown/beige/rust, yellow/gold, peaches, greens, teals, black/gray, reds.	
CHRISTMAS PRINTS, 45" . 100% cotton. Sorry, no samples..	\$6.98 yd.
GINGHAM CHECKS, 45" . 65% cotton, 35% poly	\$3.98 yd.
1/8" squares: Red, navy, black, lime, hunter green, yellow, pink, lavender, lt. blue, brown.	
1/4" squares: Red, navy, black, yellow, hunter green, pink, brown	
1" squares: Red, navy, black	\$3.98 yd.
CLOTH OF GOLD PERCALE, 45" . 100% cotton	\$3.98 yd.
Excellent for quilting. Yellow, pink, navy, white, med. green, scarlet, cream, dk. yellow, brown, black, wine, red, copen, new moss, dk. green, peach, country rose, beige, rose, colonial blue, lt. brown, berry, lt. blue, tan, parchment, teal, gold, burgundy, peacock, lt. green, purple, jade, teaberry, flesh.	
OSNABURG, 45" . 100% cotton, unbleached	\$3.79 yd.
MUSLIN . 100% cotton.	
Economy muslin, 38" . Cotton. Natural	\$2.39 yd.
45" Ecology cloth. Crease resistant. Pre-shrunk. Natural	\$3.98 yd.
ROCLON MUSLIN, 45" . 100% cotton, pre-shrunk	\$3.49 yd.
Permanent press. Unbleached or white.	
DOUBLE FACED QUILTED MUSLIN, 45" . Natural	\$9.98 yd.
No. 200SB MUSLIN, 45" . 200 thread count	\$3.98 yd.
100% cotton. Tight weave. Natural or white.	
QUILTER'S FLANNEL . 100% cotton. Natural or white.	
90"	\$8.98 yd.
108"	\$9.98 yd.
QUILT SHEETING, (MUSLIN) . 100% cotton. Unbleached or white.	
90"	\$6.98 yd.
108"	\$7.98 yd.
COTTON QUILT BACKING . 108"	\$9.98 yd.
White or natural with a leaf print pattern.	
QUILT SHEETING OR QUILT LINING . 50% poly, 50% cotton.	
90" in white or natural	\$4.98 yd.
108" in white or natural	\$5.98 yd.
118" in white or natural	\$6.98 yd.
COUNTRY PLEASURES, 45" . 100% cotton	\$6.49 yd.
SMALL FLORAL PATTERN: White w/white overlay.	

FLANNELS

FLEECE, 60" . 100% polyester. NICE-Warm for blankets, etc.	\$8.98 yd.
Lt. gray, burgundy, white, mint, med. gray, navy, beige, dk. green, olive green.	
CLASSIC FLANNEL, 45" . 100% cotton	\$4.98 yd.
White, lt. blue, mint, lt. lilac, yellow, pink, peach.	
CRAFTERS' FLANNEL, 43" . 100% cotton	\$4.98 yd.
Royal, navy, gray, lt. brown, black, burgundy, dk. green, med. green, lt. green, country blue.	
WOOL FLANNEL, HEAVY WT., 60" . Washable	\$16.98 yd.
50% wool, 50% poly. Navy, dk. brown, gray, black.	

DRESS AND SHIRT FABRIC

NEW! RAINBOW, 58" . Poly	\$5.59 yd.
Navy, blue, strawberry, cranberry, moss green, peach, dk. lavender, smoke, aquamarine.	
NEW! BUBBLE, 60" . Poly	\$5.59 yd.
Black, white, navy, teal, plum, cranberry, pink, turquoise, dark aqua, blue, lt. blue, gray, honeydew, med. gray, lavender.	
NEW! RAINE CRINKLE, 60" . Poly	\$5.59 yd.
Black, navy, blue, colonial blue, wine, raspberry, green, lt. orchid, lt. green, brick, butterscotch, turquoise, aqua, teal, tea green, lt. apricot, med. gray, royal, white, grape, plum, hunter green, sage, charcoal.	
NEW! JUNIPER, 60" . Poly	\$5.59 yd.
Black, royal, strawberry, plum, sage, dark brown.	
NEW! SPARKLE, 60" . Poly	\$5.59 yd.
Charcoal, gray, dk. peach, pumpkin, brown, carnation, turquoise, apple green, dk. orchid.	
NEW! OCEAN RIPPLE, 60" . Poly	\$5.59 yd.
Lt. blue, lavender, sage, gray, rose, pink, charcoal.	
GLACIER, 58"	\$5.59 yd.
Black, lt. gray, dk. navy, wedgewood, lt. royal, lt. brown, tan, carnation, pink, berry, strawberry, orchid, brick, dk. plum, lt. blue, med. blue, aqua, turquoise, dk. sage, pine green.	
SANDSTONE, 58"	\$5.59 yd.
Black, royal, aqua, honeydew, lime, sage, goldenrod, yellow, oatmeal, persimmon, apple green, wine, pink, turquoise, coral, dk. grape.	
FIONA, 60" . 100% polyester. Most colors	\$5.59 yd.
LENO, 56" . Polyester, med. weight dress fabric	\$5.59 yd.
Carnation, lt. gray, charcoal, lt. blue, turquoise, rust, brown, dk. sage, avocado, oatmeal.	
MOONBEAM, 58" . Polyester	\$5.79 yd.
Rust, teal, periwinkle, dusty turquoise, orchid, black, navy, wine, dk. brown, sage, lt. gray, natural, apricot, charcoal.	
NEW! FIONA CRINKLE, 58"	\$5.59 yd.
Black, med. gray, lt. royal, med. blue, mallard, khaki, spruce, moss green, mint, pink, rose, cranberry, aquamarine, dogwood (lt. brown), beige.	
WAVE CREPE, 60" . 100% poly	\$5.59 yd.
Black, navy, wedgewood, lt. blue, teal, periwinkle, turquoise, tan, celery green, raspberry, choco brown, aqua, pink, wine, med. gray.	
STAR LINEN, 58" . Polyester	\$5.59 yd.
Steel gray, teal, wedgewood, crystal blue, Dresden blue.	
OXFORD CLOTH. "I'm Impressed", 60"	\$5.98 yd.
60% cotton, 40% poly. Nice for shirts. White, pink, peach, yellow, ivory, chambray blue, lt. gray, dk. gray.	
CREPE BACK SATIN, 60" . 100% poly	\$6.98 yd.
Gray and pink.	
SLUB CREPE, 60" . 100% polyester	\$6.98 yd.
Royal, navy, forest green, burgundy.	
MIRACLE CREPE, 60" . 100% poly. A very nice crepe	\$4.98 yd.
Hard-to-find. Black and dusty lavender.	
COTTON SHIRTING, 60" . 5 oz.	\$7.49 yd.
White, black, navy, natural, slate blue.	
SHIRTING, 60" . 6-1/2 oz., 100% cotton	\$7.98 yd.
Natural, jade green, clay rose, slate blue, peach, mint, snow.	
CHAMBRAY, 62" . 100% cotton, 6-1/2 oz. Med. blue	\$6.98 yd.

PANT FABRIC

SWEDISH KNIT, 60". 100% polyester	\$10.98 yd.
Navy, black "J", dk. gray.	
No. 84D DARK NAVY DRESS DENIM. Poly/cotton	\$10.98 yd.
100% COTTON DENIM, 60".	
10 oz. Good for pants or skirts. Navy or black	\$8.98 yd.
14 oz. For strongest needs. Navy	\$9.98 yd.
14 oz. HEAVY DENIM, 60". 100% cotton. Black	\$9.98 yd.
100% COTTON BLUE DENIM, 60". 11 oz.	\$9.49 yd.
TWILL DENIM, 60". 65% poly, 35% cotton	\$7.98 yd.
Black, navy, dk. gray, dk. brown.	
60" SANF. HORSE DENIM. 100% cotton. 10 oz. Dark gray ..	\$8.98 yd.
10 oz. SANF. SADDLE DENIM, 60". 100% cotton	\$8.98 yd.
Solid navy.	
TOP CORD - CORDUROY, 60". 85% poly, 15% nylon	\$8.39 yd.
Black, navy, tan.	
SERGE, 60". 55% poly, 45% wool. Black	\$17.98 yd.
GABERDINE, 60". 100% poly. Black. Very nice	\$8.98 yd.
DOESKIN, 60". Polyester. Black, similar to Gabby	\$9.98 yd.

TABLE COVERING

TABLE PADDING, 54". White	\$9.98 yd.
OILCLOTH, 48" wide. All colors with white check pattern ..	\$8.98 yd.
Red, black, gold, yellow, brown, navy, bottle green, kiwi green, purple, orange, also white background with red cherries.	
TABLE COVERING, 53" wide. Vinyl face w/flannel back ..	\$5.98 yd.
Tavern check: Navy & white, red & white. Also in white lace print on blue, green or beige background.	
CLEAR VINYL, 54". Water barrier	\$4.98 yd.
BLACK LYCRA KNIT, 60". 97% cotton, 3% lycra	\$4.98 yd.

ORGANDYS, VOILLE, BATISTE

SWISS ORGANDY, 45". 100% cotton. White. Per. finish ..	\$19.98 yd.
No. 2 WHITE AMERICAN ORGANDY, 45". 100% cotton ..	\$4.49 yd.
ZEPHER BATISTE, 45". 100% cotton. White only	\$4.59 yd.
COMBED COTTON VOILLE, 45". Soft finish. White	\$4.98 yd.
IMPERIAL VOILLE, 60". 65% dacron, 35% cotton	\$5.49 yd.
White or black.	

LININGS

FUR LINING, 60". 100% polyester	\$10.98 yd.
Black, wine, dk. green, brown, lt. navy.	
QUILTED NYLON THINSULATE LINING, 60". Black ..	\$10.98 yd.
QUILTED NYLON INSULATED LINING, 60". Black	\$6.98 yd.
Dacron backing. Dry cleanable. Washable. Perspiration proof..	
BLANKET LINING, 56". 60% acrylic, 40% dacron	\$4.59 yd.
Ideal for lining denim overshirts and corduroy coats, etc. Pre-shrunk. Dark gray striped.	
SOFT LANDING SUIT LINING, 60". Polyester	\$4.98 yd.
Medium weight. Black.	

OTHER FABRIC

NYLON TRICOT, 54". White nylon slip fabric	\$4.59 yd.
SATIN (SOFT LANDING), 60". 100% poly. Black	\$3.98 yd.
QUILTED THERMA-FLEC, HEAT RESISTANT CLOTH, 44".	
Scorch tested to 390°. Great for mitts, pads, ironing board covers. Silver color. Heavyweight	
THERMA-FLEC (outer fabric only)	\$15.98 yd.
CHEESECLOTH, 36". 100% cotton	\$7.98 yd.
CHEESECLOTH, 36". 100% cotton	\$1.98 yd.
TERRY TOWELING, 45". 100% cotton. White	\$10.98 yd.
BIRDSEYE DIAPER CLOTH, 36". 100% cotton	\$3.98 yd.
MOSQUITO NETTING, 54". 100% nylon. White	\$1.98 yd.
72" NETTING. Nylon, protects plants from birds	\$.98 yd.

WHITE HUCK TOWELING, 15". 100% cotton	\$2.98 yd.
WHITE DISH TOWELING, 17". 100% cotton	\$2.59 yd.
ERIN HANDKERCHIEF LINEN, 60"	\$18.98 yd.
100% pure Irish linen. Ivory color-off white.	
BURLAP, 45". 100% cotton. Natural color	\$4.98 yd.
MONK'S CLOTH, 60". 100% cotton. Natural	\$9.98 yd.
EMBROIDERED EYELET, 60". 65% poly, 35% cotton	\$4.49 yd.
White or ecru.	
AIDA CLOTH, 50". 100% cotton. Ivory or white	\$11.98 yd.
Used for cross stitch. 14 count.	
FLAX LINEN, 60". 100% linen. Ivory-off white	\$17.98 yd.
RUBBER SHEETING, HEAVY GRADE, 36". White	\$15.98 yd.
To protect your mattress, etc. Flannel on both sides, waterproof.	
100% COTTON TICKING, 42". Natural or white	\$5.98 yd.
PILLOW TICKING, 32". 100% cotton. Striped	\$5.98 yd.
UNBLEACHED DRILL, 60". 6 oz., 100% cotton. Natural ..	\$8.98 yd.
DRILL, 38". 8 oz., 100% cotton. Natural	\$3.49 yd.
UNBLEACHED DUCK, 60". 12 oz., 100% cotton. Natural ...	\$8.98 yd.
HEAVY WOOL COATING, 60". 24 oz.	\$23.98 yd.
80% wool, 20% nylon. No. 5 Black	
BUCKRAM, 20". A real nice buckram. White only	\$3.89 yd.
BUCKRAM, 30". Extra heavy. Black or white	\$4.98 yd.

INTERFACING-STIFFENERS-BONDINGS

No. 2030 VERI-SHAPE, 45". 50% poly, 50% rayon	\$3.98 yd.
Sew in, woven, firm. White or black	
No. 820 QUILTERS GRID, 45". 100% poly	\$2.89 yd.
Has square markings. Ideal for watercolor quilts. Iron on. White.	
No. 3000 STITCH WITCHERY, 20". 100% polyamide	\$1.39 yd.
Fusible web for bonding fabrics. White.	
No. 3501 HEAT & BOND ADHESIVE, 17". Ultrahold	\$2.39 yd.
No. 805 WONDER UNDER, 17"	\$2.69 yd.
Transfer and fusing, paper backed fusible web. White.	
No. 808 CRAFT-FUSE, 22". 60% poly, 40% rayon	\$1.98 yd.
Iron on for crafts and home decorating. White.	
No. 3100 PATTERN-EASE, 46". 80% poly, 20% rayon	\$1.39 yd.
Non woven tracing material for altering, duplicating and designing patterns and crafts. White.	
No. 3190 TEARAWAY, 75% rayon, 25% poly	\$1.39 yd.
Non woven, to create embroidery and applique designs on fabric.	
No. 9700 ARMO FLEECE PLUS, 45". 100% poly	\$2.98 yd.
Needlepunch for interlinings, padding, quilting and crafts. White.	
No. 9720 FUSIBLE ARMO FLEECE PLUS, 45"	\$4.98 yd.
100% poly. For paddings, crafts, etc. White.	
No. 1140 FUSI-FORM, 24". 90% poly, 10% rayon	\$1.59 yd.
Lightweight, fusible for soft controlled shaping. White.	
No. 1300 FUSI-KNIT, 20". 100% nylon	\$1.98 yd.
Fusible for soft shaping and tailoring. White.	
No. 1350 SO SHEER, 20". 100% polyester	\$2.39 yd.
Fusible knit for soft shaping. Black or white.	
No. 950F SHIRTAILOR, 22". 100% polyester	\$2.79 yd.
Fusible for shirt collars and cuffs. White.	
No. 1160 FUSI-FORM, 22". 70% poly, 30% rayon	\$1.69 yd.
Suitweight, fusible, non woven for firm support. White.	
No. 1010 FORM-FLEX, 22". 100% cotton	\$2.98 yd.
All-purpose durable press. Fusible, woven interfacing. White or black.	
No. 87009 TAILORS PRIDE, 24"	\$5.98 yd.
40% cotton, 33% hair, 27% rayon. Sew-in tailoring canvas for medium to heavyweight coat and suit fabric.	
No. 87008 FUSIBLE ACRO (Tailors Pride), 24"	\$7.98 yd.
16% poly, 12% hair, 32% Viscose, 5% nylon, 16% cotton, 19% wool.	

CALL TOLL FREE (1-800-595-0031)
 Phone No. (574) 825-2400
 www.gohnbrothers.com

ORDER BLANK

DATE _____

CHECK ONE:

- Shipping Address (if different from at left)
 Address Correction

Name _____
First Middle Initial Last

Name _____
First Middle Initial Last

Address _____

Address _____

City _____ State _____

City _____ State _____

Zip _____ Phone () _____

Zip _____ Phone () _____

If out of any item, may we make the best substitution possible? _____ Would you like to receive our circulars? Yes No

Article No.	Quantity	Description of Merchandise	Size	Color	Price Each	Total

We are now accepting MasterCard and Visa!
 You may still use check or money order.

AMOUNT \$ _____

SHIPPING CHARGES (See chart) \$ _____

Indiana Residents Add 7% Sales Tax \$ _____

TOTAL \$ _____

Credit Card No. _____

Expiration Date _____

MasterCard VISA V-Code (on back of card) _____

USE THIS CHART TO DETERMINE SHIPPING CHARGES			
STEP 1: Locate your zip code line			
STEP 2: Locate your order amount column			
ZIP CODE	ORDER AMT. \$0-\$49.99	ORDER AMT. \$50.00-\$99.99	ORDER AMT. \$100.00 AND UP
ZIP CODE - 00000 to 49999	\$9.00	\$10.00	\$11.00
ZIP CODE - 50000 to 79999	\$9.00	\$10.00	\$12.00
ZIP CODE - 80000 to 99999	\$10.00	\$12.00	\$14.00

Shipping is based on UPS charges. Additional costs for shipping Parcel Post will be billed back. Hawaii and Alaska orders are shipped Parcel Post. Orders outside the United States will be charged international rates.

HAVE A GOOD IDEA?

Tell us. At Gohn Bros. we try to meet your needs. If you know of a product we should have, or an improvement we should make, let us know.

BE A FRIEND TO YOUR FRIENDS. Please print the names of your friends whom you would like to receive our circular.

Name _____

Name _____

R.R. _____ Box _____

R.R. _____ Box _____

City _____ State _____ Zip Code _____

City _____ State _____ Zip Code _____

PLEASE KEEP A RECORD OF THIS ORDER

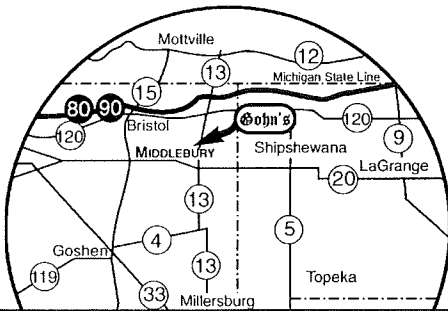
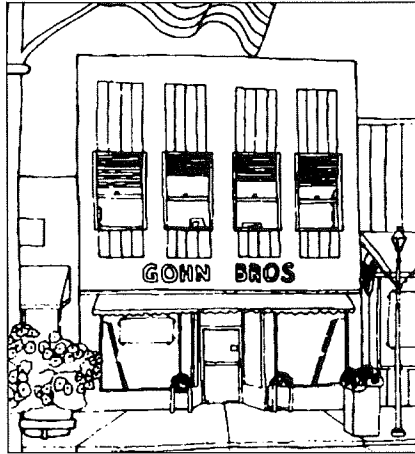
GOHN BROS. • Box 1110 • Middlebury, Indiana 46540-1110

Gohn Bros.

Box 1110
 105 South Main Street
 Middlebury, Indiana 46540-1110
 ~ Over 100 Years ~

ATTENTION POSTMASTER
 Change Service Requested

PRSRST STD
 U.S. POSTAGE
PAID
 Middlebury, IN
 Permit No. 7



PANT FABRIC

TRI-BLEND DENIM, 60" . 67% poly, 23% cotton, 10% nylon. Navy or black	\$12.98 yd.
SHARKSKIN, 60" . Polyester. Nice for men's pants. Black, dk. navy, charcoal	\$6.98 yd.
SWEDISH KNIT, 60" . 100% polyester. Solid back with solid face. Navy, black #J, dk. gray	\$10.98 yd.
No. 84D DARK NAVY DRESS DENIM . Poly/cotton	\$10.98 yd.
9 oz. BLUE DENIM . 100% cotton (summer weight)	\$7.98 yd.
100% COTTON DENIM, 60"	
10 oz. Good for pants or skirts. Navy or black	\$8.98 yd.
14 oz. For strongest needs. Navy	\$9.98 yd.
14 oz. HEAVY DENIM, 60" . 100% cotton. Black	\$9.98 yd.
100% COTTON BLUE DENIM, 60" . 11 oz.	\$9.49 yd.
TWILL DENIM, 60" . 65% poly, 35% cotton. Black, navy	\$7.98 yd.
60" SANF. HORSE DENIM . 100% cotton. 10 oz. Dark gray	\$8.98 yd.
10 oz. SANF. SADDLE DENIM, 60" . 100% cotton. Solid navy	\$8.98 yd.
TOP CORD - CORDUROY, 60" . 85 poly, 15% nylon. Black, navy, tan	\$8.39 yd.
SERGE, 60" . 55% poly, 45% wool. Black	\$17.98 yd.
GABERDINE, 60" . 100% poly. Black. Very nice	\$8.98 yd.
DOESKIN, 60" . Polyester. Black, similar to Gabby	\$9.98 yd.

STORE HOURS: Mon.-Fri. 8:00 to 5:30
 Saturday 8:00 to 4:00
 Sunday Closed

Gohn Bros.

Over 100 Years
Quality Pays